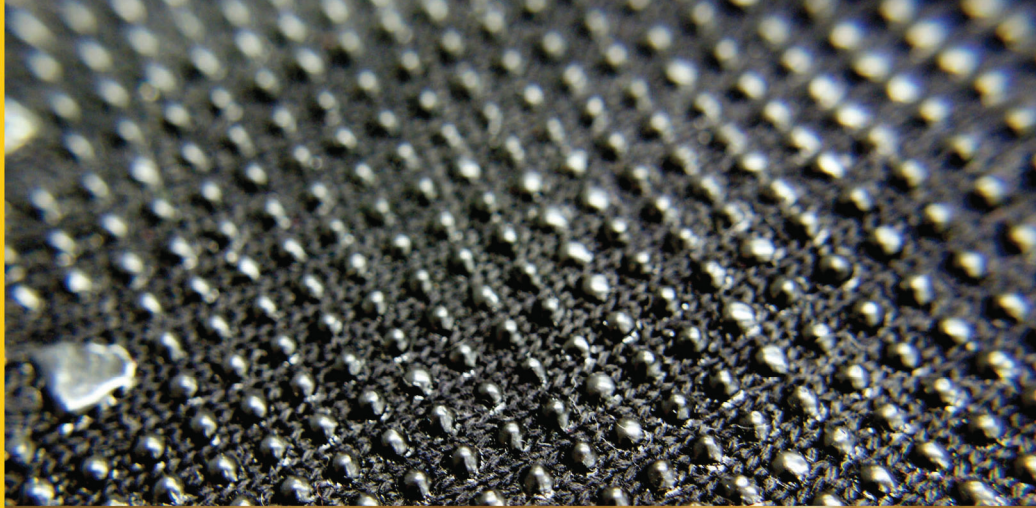




**WORK  
GLOVES  
& SAFETY  
PRODUCTS**



# INDEX







<b>LEATHER</b>	<b>2</b>
<b>KNIT/COATED PALM</b>	<b>6</b>
<b>FLEECE</b>	<b>9</b>
<b>MECHANICS</b>	<b>10</b>
<b>JERSEY/COTTON</b>	<b>14</b>
<b>SAFETY</b>	<b>15</b>
<b>DISPLAYS</b>	<b>17</b>
<b>EN388 SAFETY</b>	<b>21</b>

CAT Gloves and Safety (“Cat Gloves”) warns its customers that some products in this catalog contain chemicals known to the State of California to cause cancer, and birth defects or other reproductive harm. Boss provides a Proposition 65 warning to California residents for any such products at the time of order.



CAT012222

L  
●  
X  
●**LINED SPLIT LEATHER PALM**

- Therm insulation and fleece-lined for warmth and comfort.
- Black, split leather palm with reinforced fingertips and knuckle strap.
- Yellow spandex back and shirred elastic wrist.

CAT012216

M  
●  
L  
●  
J  
●**PREMIUM GOATSKIN PADDED PALM**

- Gel padded palm provides moderate impact and vibration protection.
- Breathable polyester/spandex back stretches with hand movement.

EN 388



2122

CE



**CAT012109**



L  
●

**HIGH VISIBILITY PIGSKIN LEATHER DRIVER**

- Pearl grain pigskin leather palm and index finger.
- Fluorescent green back and gunn cut design.
- Shirred elastic wrist for snug fit.
- Leather Quality: Premium.

**CAT013101**



L  
●

**PREMIUM GRAIN LEATHER PALM**

- Leather index finger, fingertips and knuckle strap.
- Gunn cut design with wing thumb.
- Cat logo imprinted on rubberized safety cuff.
- Leather Quality: Premium

**CAT013103**



L  
●

**HIGH VISIBILITY PIGSKIN LEATHER PALM**

- Pigskin leather index finger, fingertips and knuckle strap.
- Gunn cut design with wing thumb.
- Rubberized safety cuff.
- Leather Quality: Premium.

**CAT013201**



L  
●

**COWHIDE SPLIT LEATHER PALM**

- Gray, jersey-lined split leather palm.
- Leather index finger, fingertips and leather knuckle strap.
- Cat logo on rubberized safety cuff.

EN 388  
  
 3243 CE



CAT012201


 M  
 ●  
 L  
 ●  
 J  
 ●

EN 388



2111

**REVERSED PIGSKIN PALM**

- Double stitched in high-wear areas for added durability.
- Breathable polyester/spandex back stretches with hand movement.
- Flexible even after repeated washings.

CAT012202


 M  
 ●  
 L  
 ●  
 J  
 ●

EN 388



2111

**HALF-FINGER PIGSKIN PALM**

- Double stitched in high-wear areas for added durability.
- Breathable polyester/spandex back stretches with hand movement.
- Flexible even after repeated washings.

CAT012205


 M  
 ●  
 L  
 ●  
 J  
 ●

EN 388



2122

**PREMIUM DEERSKIN**

- Gel padded palm for moderate impact and vibration protection.
- Breathable polyester/spandex back stretches with hand movement.
- Leather Quality: Premium

CAT012206


 M  
 ●  
 L  
 ●  
 J  
 ●

EN 388



2122

**PREMIUM DEERSKIN HALF-FINGER**

- Padded palm for moderate impact and vibration protection.
- Breathable polyester/spandex back stretches with hand movement.
- Leather Quality: Premium



## CAT012110

M  
●  
L  
●  
J  
●  
2X  
●  
3X  
●



### GRAIN COWHIDE DRIVER

- Grain leather driver with split leather palm patch.
- Double stitching on high-wear areas.
- Adjustable ball and tape closure.
- Provides thermal protection.
- Leather Quality: Premium

## CAT012219

L  
●



### WOMEN'S GRAIN LEATHER DRIVER

- Keystone thumb for comfort and flexibility.
- Shirred elastic wrist for a secure fit.
- Packaged in assorted colors (pink & green).
- Leather Quality: Premium



CAT017400



- M
- 
- L
- 
- J
- 

EN 388



2242



**BLACK LATEX PALM WITH DIESEL POWER LOGO**

- Textured latex coated palm and fingers.
- Helps protect against abrasions, cuts and punctures.
- Provides a snug, flexible fit with excellent grip.

CAT017410



- M
- 
- L
- 
- J
- 

EN 388



2242



**LINED LATEX PALM WITH DIESEL POWER LOGO**

- Brushed acrylic interior for warmth.
- Breathable polyester/cotton blend.
- Latex palm and fingers with knit wrist.
- Helps to reduce possible injury from abrasions, minor cuts and punctures.

CAT017414



- M
- 
- L
- 
- J
- 

**LINED NYLON COATED PALM**

- Seamless nylon, terry lined shell.
- Foam nitrile coated palm and fingers; superior protection and warmth.
- Adjustable hook and loop wrist to assure a secure fit.





CAT017415



- M
- 
- L
- 
- J
- 

EN 388  
  
 4131 CE

**DOUBLE COATED LATEX PALM**

- Helps to reduce possible injury from abrasions, minor cuts and punctures.
- Textured latex palm and finger provides excellent grip.

CAT017416



- M
- 
- L
- 
- J
- 

EN 388  
  
 4131 CE

**YELLOW NYLON NITRILE COATED PALM**

- Foam cell nitrile coated palm and fingers.
- Exceptional grip in wet conditions.
- Excellent tactility and ease of movement.
- Helps to reduce possible injury from abrasions, minor cuts and punctures.

CAT017417



- M
- 
- L
- 
- J
- 

EN 388  
  
 1231 CE

**HIGH VISIBILITY LATEX COATED PALM**

- Extra-heavy brushed acrylic fluorescent string knit.
- Black textured latex coated palm and fingers.
- Made to withstand cold temperatures.

CAT018000



- M
- 
- L
- 
- J
- 

EN 388  
  
 4342 CE

**CUT RESISTANT LEVEL 3 STRING KNIT**

- Extra tough HPPE/polyester/spandex shell.
- Polyurethane-coated palm and fingers.
- Cut resistant string knit (cut level 3).
- Extra tough with excellent tactile sensitivity.





CAT017411



- M
- 
- L
- 
- X
- 

EN 388:2016



**HIGH-VIS LINED COATED PALM**

- 3/4 Dip Textured Latex Coating
- Brushed Acrylic For Added Warmth
- Knit Wrist

CAT017418



- M
- 
- L
- 
- X
- 
- 2X
- 

EN 388:2016



**HIGH-VIS LATEX COATED PALM**

- Premium High Visibility Polyester Shell
- Textured Latex Coated Palm And Fingers
- Extended Knit Wrist

CAT017419



- M
- 
- L
- 
- X
- 
- 2X
- 

EN 388:2016



**DIPPED AND DOTTED NITRILE COATED PALM**

- Breathable Nylon Shell
- Dipped And Dotted Nitrile Palm
- Extended Knit Wrist



CAT016201

L



**ANTI-PILL FLEECE WITH ADJUSTABLE WRIST**

- Black, anti-pill fleece.
- Adjustable hook and loop closure.
- Palm and thumb patch for extended wear-ability.
- Brushed polyester lining for warmth.



FLEECE



## CAT012211



M  
●  
L  
●  
J  
●

EN 388  
  
2121 **CE**

### PADDLED PALM UTILITY WITH ADJUSTABLE WRIST

- Padded in high-wear areas.
- Flexible spandex/neoprene/nylon back with textured neoprene knuckle strap.
- Durable yet supple and easy to care for.

## CAT012213



M  
●  
L  
●  
J  
●

EN 388  
  
2121 **CE**

### NEOPRENE PADDLED PALM UTILITY

- Ergonomic pre-curved fingers for long-wearing comfort.
- Silicone finger grips provide traction and durability.

## CAT012212



M  
●  
L  
●  
J  
●

EN 388  
  
2121 **CE**

### MULTI-PURPOSE UTILITY WITH ADJUSTABLE WRIST

- Durable, lightweight synthetic leather palm and fingertips.
- Neoprene cuff with adjustable hook and loop closure.

## CAT012215



M  
●  
L  
●  
J  
●

EN 388  
  
2122 **CE**

### PADDLED PALM UTILITY WITH MESH BACK

- Synthetic leather palm, high wear area padding, increased protection.
- Mesh upper for added ventilation in hot temperatures.





## CAT012214



M  
●  
L  
●  
J  
●

EN 388



2121

### HIGH VISIBILITY PADDED PALM UTILITY

- Synthetic leather palm, padded in high wear areas.
- Green polyester/spandex back, exceptional fit, comfort, visibility.
- Reflective tape on knuckle/fingertips.

## CAT012218



M  
●  
L  
●  
J  
●  
2X  
●

EN 388



3131

### SYNTHETIC PALM IMPACT WITH SILICONE GRIP

- Synthetic leather palm with silicone grip.
- Molded knuckle impact protection.
- Adjustable wrist closure.

## CAT012230



M  
●  
L  
●  
J  
●  
2X  
●

EN 388



3131

### SYNTHETIC PALM IMPACT WITH SILICONE GRIP

- Synthetic leather palm with silicone grip.
- Molded knuckle impact protection.
- Adjustable wrist closure.



CAT012217



- M
- 
- L
- 
- X
- 

EN 388  
 2121 **CE**

**PADDED PALM UTILITY WITH ADJUSTABLE WRIST**

- Synthetic leather palm with PVC reinforced palm, fingers and knuckles.
- Water resistant rubber and nylon back.
- Wrap-around wrist strap for a secure fit.

CAT4000



- L
- 
- X
- 
- 2X
- 
- 3X
- 

**HIGH VISIBILITY IMPACT WITH SYNTHETIC PALM**

- Padded with high visibility orange back.
- Reflective knuckle strap.
- Molded knuckle impact protection.
- Adjustable wrist closure.

CAT5000



- L
- 
- X
- 
- 2X
- 
- 3X
- 

**HIGH VISIBILITY IMPACT WITH REINFORCED PALM**

- Padded with high visibility orange back.
- Reflective knuckle strap.
- Molded knuckle impact protection.
- Synthetic leather palm with palm patches.

CAT6000



- L
- 
- X
- 
- 2X
- 
- 3X
- 

EN 388  
 1121 **CE**

**HIGH VISIBILITY IMPACT WITH SYNTHETIC PALM AND NEOPRENE CUFF**

- Synthetic leather palm with PVC dots.
- Molded knuckle impact protection.
- Sewn with cut and heat resistant aramid thread.
- Neoprene/nylon/polyester cuff.



CAT012220

M  
●  
L  
●  
X  
●  
2X  
●



### HIGH VISIBILITY PIGSKIN IMPACT UTILITY

- Pigskin leather palm.
- Padded palm.
- Adjustable wrist.
- Fluorescent green spandex back.

CAT012224

M  
●  
L  
●  
X  
●  
2X  
●



TOUCH

EN 388:2016



3220X



### HIGH VISIBILITY SYNTHETIC PALM UTILITY

- Touchscreen fingertips.
- Adjustable wrist.
- Durable padded palm.
- Double stitched in high wear areas.





**CAT015400**



L  
●

For Minimal Risk Only.

**BREATHABLE COTTON JERSEY**

- Unlined, black breathable cotton jersey.
- PVC micro-dot palm for extra grip.
- Cat logo embroidered on back of each hand.
- Knit wrist.

**CAT015300**



L  
●

**OPEN CUFF FLEECE LINED JERSEY**

- Fleece-lined for comfort and warmth.
- Open cuff for easy on/off.
- PVC dotted palm and fingers for extra grip.
- Cat logo on woven label, sewn on back of each hand.



## CAT019501



### HIGH VISIBILITY SAFETY VEST ANSI APPROVED

- ANSI approved, Class II.
- Fluorescent safety vest.
- Reflective tape wraps front and back.
- Hook and loop closure.
- Reinforced, black nylon tape sewn on all edges.
- Lightweight, breathable, high visibility for safety.

## CAT019665



### VENTED WHITE HARD HAT ANSI APPROVED CE CERTIFIED

- Impact absorbent polypropylene shell with transparent brim
- Slotted sides to accommodate accessories
- 4 point ratcheting suspension for shock absorption

## CAT019666



### VENTED YELLOW HARD HAT ANSI APPROVED CE CERTIFIED

- Impact absorbent polypropylene shell with transparent brim
- Slotted sides to accommodate accessories
- 4 point ratcheting suspension for shock absorption





## CAT019670

**WHITE HARD HAT ANSI APPROVED CE CERTIFIED**

- ANSI approved and CE certified.
- Impact absorbent polypropylene shell.
- Ratcheting adjustable suspension.
- Adjustable/removable chin strap.

## CAT019671

**YELLOW HARD HAT ANSI APPROVED CE CERTIFIED**

- ANSI approved and CE certified.
- Impact absorbent polypropylene shell.
- Ratcheting adjustable suspension.
- Adjustable/removable chin strap.

## CAT019631

**CE CERTIFIED YELLOW BUMP CAP**

- High-density polyethylene shell.
- Adjustable suspension and chin strap.
- Side ventilation holes for added comfort in high temperatures.

## CAT019630

**CE CERTIFIED WHITE BUMP CAP**

- High-density polyethylene shell.
- Adjustable suspension and chin strap.
- Side ventilation holes for added comfort in high temperatures.



## CATSB1



### COUNTER OR SHELF DISPLAY BIN

- Black branded corrugated bin.
- Holds 2-4 dozen pairs of gloves.
- Dimensions: 7.5"H x 11.75"W x 17.5"D
- Countertop Footprint: 1.43 square feet

## CATCD2



### 4 PEG COUNTERTOP DISPLAY RACK

- 4 peg countertop display rack.
- Holds 4-8 dozen pairs of gloves.
- Dimensions: 23"H x 13.5"W x 7.75"D
- Countertop Footprint: 0.73 square feet

## CATSB5



### 2 PEG COUNTERTOP DISPLAYER

- Black branded 2 pegged displayer.
- Holds 2-3 dozen pairs of gloves.
- Dimensions: 11.5"H x 10.25"W x 9"D
- Countertop Footprint: 0.75 square feet

## CATGT8



### GONDOLA TOPPER

- 8 peg gondola topper.
- Easy Installation.
- Holds 8 dozen pairs of gloves.
- Dimensions: 17"H x 36"W x 6"D



## CAT12TT/TC



### FREESTANDING METAL FLOOR DISPLAY

- Holds 12 dozen pairs of gloves.
- Dimensions: 68"H x 15"W x 16"D
- Floor Footprint: 1.67 square feet
- #CAT12TC - With pricing channels

## CAT24TT/32TT



### FREESTANDING METAL FLOOR DISPLAY

#### #CAT24TT

- Holds 24 dozen pairs of gloves.
- Dimensions: 74"H x 33"W x 19"D
- Floor Footprint: 4.35 square feet

#### #CAT32TT

- Holds 32 dozen pairs of gloves.
- Dimensions: 74"H x 42"W x 21"D
- Floor Footprint: 6.13 square feet



## CAT24TD



### TOWER DISPLAY

- Freestanding corrugated floor display.
- 24 peg hooks.
- Holds 5-7 dozen pairs of gloves.
- Dimensions: 61.75"H x 22"W x 22" D
- Floor Footprint: 3.36 square foot

## CATPB3



### QUARTER PALLET DISPLAY

- Black branded quarter pallet display bin.
- Holds 12-24 dozen pairs of gloves.
- Dimensions: 50.75"H x 23.75"W x 19.75"D
- Floor Footprint: 3.36 square feet

## CATFD4



### CORRUGATE FLOOR DISPLAY

- Black branded floor display bin.
- Holds 8-12 dozen pairs of gloves.
- Dimensions: 30"H x 19"W x 12"D
- Floor Footprint: 4.16 square feet

## CATFD2215



### CORRUGATE FLOOR DISPLAY

- Branded floor display bin.
- Holds 8-12 dozen pairs of gloves.
- Dimensions: 30"H x 19"W x 12"D
- Floor Footprint: 1.58 square feet



CATCS1



**CLIP STRIP DISPLAY**

- In-line clip strip displayer.
- Holds 1 dozen pairs of gloves.
- Dimensions with product: 39"H x 9.5"W x 6.5"D

CATRV1



**ROTATING FLOOR DISPLAY**

- Holds up to 24 dozen pairs of gloves
- Easily rotates to access both sides.
- Dimensions with product:  
78.92" H x 29.75" D(Diameter)



# EN388 SAFETY SCORE

The EN388 safety score is used to assess a gloves performance in four areas of mechanical hazards. These hazards are abrasion, cut, tear & puncture resistance levels. Controlled testing is performed and the glove is rated according to the outcome. In choosing a glove one must keep in mind that there may not be a need for the highest rated glove for every situation. It is best to evaluate and make decisions based on the activity type. If high levels of dexterity are needed to be maintained, then a bulkier glove is less desirable. If hazards of cuts and abrasions are likely, then the higher scoring glove is the best choice.

- Resistance to abrasion: based on the number of cycles required to abrade through the sample glove.
- Blade cut resistance: based on the number of cycles required to cut through the sample at a constant speed.
- Tear resistance: based on the amount of force required to tear the sample.
- Puncture resistance: based on the amount of force required to pierce the sample with a standard sized point.

Performance Level	1	2	3	4	5
Abrasion Cycles	100	500	2000	8000	N/A
Cutting Index	1.2	2.5	5	10	20
Tear force	10	25	50	75	N/A
Puncture Force	20	60	100	150	N/A



## EN388

In the EN-388 symbol you will see a number for each category. All tests are ranked 1-4 (4 being the highest) except for the blade cut category ranking of 1-5.





[info@keeandgo.com](mailto:info@keeandgo.com) | [www.keeandgo.com](http://www.keeandgo.com)

